

## The Alameda Disposable Food Service Ware Reduction Law



*By finding new ways to reduce to-go packaging, Alamedans are ensuring fewer straws and other single-use disposable items will become litter on our beaches and streets, and are reducing material going to the landfill.*

- **Reusables are best**  
Provide paper, wood, or bamboo options when reusables are not available.
- **Straws-on-request**  
Single-use plastic straws must be replaced with compostable fiber (paper, wood, pasta) straws, and these straws should be provided only upon request of the customer.
- **Fiber, not plastic**  
Alameda food vendors must provide compostable, fiber-based packaging for to-go items. Compostable plastic products are not compliant with the Law.



## Sustainable Resources for Businesses



Alameda County has resources that can help make your business greener and also save you money. Some of the sustainable projects the County can assist businesses with are energy efficiency, environmentally preferable purchasing, greening the workplace, sustainable transportation, and water conservation. Visit [acgov.org/sustain/you/business.htm](http://acgov.org/sustain/you/business.htm) for more info.

## Get Help to Reduce Single-Use



You can find grant applications, success stories, reusable foodware system/service providers, safety guidelines, tips to reduce food packaging waste, and more at [StopWaste.org/at-work/reduce-reuse-repair/reducing-disposable-foodware](http://StopWaste.org/at-work/reduce-reuse-repair/reducing-disposable-foodware)

**DISPOSE OF HAZARDOUS WASTE RESPONSIBLY**

**Hazardous Waste Programs for Businesses**

**Hazardous waste does NOT belong in any ACI collection cart or bin.**

Before tossing it out, check the label. If it's marked Danger, Warning, Poisonous, Toxic, or Flammable, it's hazardous and requires special handling. Alameda County operates Hazardous Waste Disposal Programs for businesses.



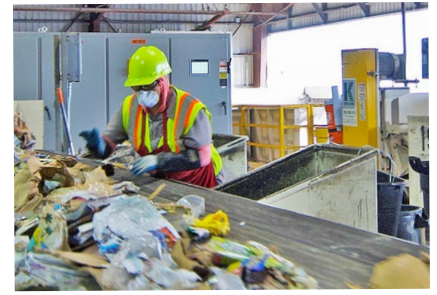
**SMALL BUSINESS HAZARDOUS WASTE SERVICE:** A hazardous waste disposal service for qualifying Very Small Quantity Generators. *Accounts and appointments are required.*

**BUSINESS DROP-IN SERVICE:** An express service for all Alameda County businesses for latex paint, aerosol cans, fluorescent lamps, and household batteries drop off only. *Accounts and appointments are NOT required.*

Visit [StopWaste.org/at-work/business-hazardous-waste](http://StopWaste.org/at-work/business-hazardous-waste) for more info on all of the business programs.

**Please Remember: No Sharps**

**"Sharps" is a medical term for devices with sharp points or edges that can puncture or cut skin, such as needles, syringes, lancets, auto-injectors (such as EpiPens), and infusion sets.** Contact Alameda County Household Hazardous Waste at 1 (800) 606-6606 or visit [Stopwaste.org/hhw](http://Stopwaste.org/hhw) for local information on safe, free disposal.



**Please Protect our Sorting Staff**

Our Materials Recovery Facility (or MRF) sorting staff thank you for keeping them safe by making sure hazardous waste, needles, sharps, masks, gloves, wipes, tissues, garbage, organics, and anything with bodily fluids stays out of the recycling. Scan the QR code at right to access a virtual tour of our sorting facility.



**HOLIDAY SERVICE SCHEDULE**

There will be **NO CHANGES** to the collection schedule during the week of Memorial Day.

**SHARE THIS INFORMATION.** This newsletter can be downloaded and printed from our website [AlamedaCountyIndustries.com/alameda/commercial/resources](http://AlamedaCountyIndustries.com/alameda/commercial/resources)

**Aim for Zero Waste**



Sign up for paperless and auto-pay billing and we will plant a tree. Visit [AlamedaCountyIndustries.com/alameda/plantatree](http://AlamedaCountyIndustries.com/alameda/plantatree) for more info.



**Alameda County Industries**

We are proud to be your service provider for **Recyclables, Organics, & Garbage.**



**Contact us**  
[AlamedaCountyIndustries.com](http://AlamedaCountyIndustries.com)  
[info@alamedacountyindustries.com](mailto:info@alamedacountyindustries.com)  
510-483-1400

**Office**  
Monday - Friday: 7am - 6pm  
2307 Blanding Avenue, Suite B  
Alameda, CA 94501