



Alameda County Industries

We are proud to be your service provider for **Recyclables, Organics, & Garbage.**

City of San Leandro

Single Family Residential Customers

JANUARY - MARCH 2025



The ACI Curbside Collection Extras

CURBSIDE GARBAGE COLLECTION

1. EXTRA GARBAGE TAGS: Overflow garbage will only be collected when you affix pre-paid tags to the bag(s). Contact us to buy tags or arrange for additional service.

CURBSIDE RECYCLABLES COLLECTION

2. USED MOTOR OIL AND OIL FILTER COLLECTION:* Place oil in one gallon or smaller, sealed screw-top containers less than 12" in height. Place oil filters in sealed zipper-style bags. Place jugs and bags next to (not inside) your recyclables cart on the curb, not in the gutter. No other automotive liquids are accepted.

3. HOUSEHOLD BATTERIES: Place them in a zipper-lock style bag on top of (not inside) your **recyclables** collection cart. Tape terminals on nine-volt batteries. No automotive or liquid lithium-ion batteries are allowed.

4. NEW IN FEBRUARY! EXTRA CARDBOARD: Flatten, cut into pieces no larger than two feet by three feet, and stack next to your **recyclables** cart.

CURBSIDE ORGANICS COLLECTION

5. NEW IN FEBRUARY! USED COOKING OIL:* Collect in one gallon or smaller, sealed screw-top containers less than 12" in height. Place next to (not inside) your **organics** cart, on the curb, not in the gutter.

6. EXTRA YARD TRIMMINGS BAGS: Place next to your **organics** cart on collection day. Only ACI bags are accepted. Contact us to purchase.

HANDY KITCHEN PAIL: Use to collect food scraps and food-soiled paper in your home. When full, empty the pail into your **organics** cart. Need a pail? Contact us; we'll deliver one.



Help us Provide Safe & Efficient Service

- Place carts out for collection by 6:00am and remove prior to 12:00am the following day.
- Make sure cart wheels are facing your home.
- Leave three feet (or as much space as possible) between each cart and avoid placing carts near obstacles.
- Place materials loosely in carts so they will empty properly.
- Make sure cart lids are fully closed. Overloaded carts can cause litter and attract critters.
- Report damaged carts to ACI so that we can schedule a repair or replacement on your next service day.

*We will collect up to three gallons of oil per week. Do not mix oils in the containers. Request the delivery of oil jugs and filter bags by ACI. Contact us at (510) 357-7282 or info@AlamedaCountyIndustries.com.

Easy Ways to Be Sustainable

DON'T WASTE FOOD

- Purchase only what you need and use what you buy.
- Compost any leftovers (use your green organics cart and handy kitchen pail).

For more tips on how to reduce food waste, visit StopFoodWaste.org

REDUCE, REUSE, RETHINK, & REPAIR

- Buy fewer things, shop second-hand, and repair what you can.
- Use reusable shopping bags, travel mugs, and water bottles.
- Choose products sold with little or no packaging.
- Refuse disposable foodware and single-use condiments.

Find more info on better buying decisions at StopWaste.org/at-home/reduce-reuse-recycle-rot/buy-green

PLANT NATIVE SPECIES

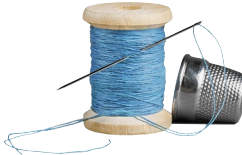
- Encourage native species in your garden or space outside your home.
- Replace non-native plants, especially any considered invasive.
- Skip insecticides and other chemicals.

Visit the California Native Plant Society for more resources. cnps.org/gardening

Batteries Don't Belong

It is illegal to dispose of batteries, and any other Household Hazardous Waste, INSIDE any ACI collection container.

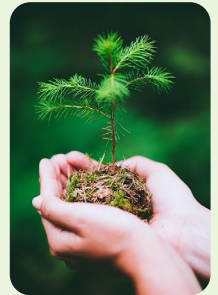
Keep our workers safe. Batteries that are not handled properly can start fires, endangering our employees and damaging vehicles and equipment. Household batteries can be collected through our curbside program (see other side). Proper disposal of all Household Hazardous Waste is fast and free at four locations in Alameda County. Contact the Alameda County Household Hazardous Waste at 1 (800) 606-6606 or visit StopWaste.org/hhw for more info.



TRASH-FREE IDEA Make a Difference Go Paperless!

Choose paperless for your ACI billing and we will plant a tree!

ACI will plant a tree for every customer that chooses paperless for their ACI billing during the ACI Go Paperless Plant-a-Tree Campaign. Over 6000 trees have been planted so far!



Scan the QR code for more info, to visit the ACI forest, and to sign up for paperless billing. Thank you for your efforts! Together we can all make a difference!



Holiday Service Schedule



The collection service schedule will NOT change during the weeks of Martin Luther King Jr. Day and Presidents' Day. Please be sure to put your carts out for collection by 6am on your regular service day.

WHEN IN DOUBT, FIND OUT! CONTACT US:

website: AlamedaCountyIndustries.com/sanleandro

phone: (510) 357-7282 • email: info@AlamedaCountyIndustries.com