

ACI Residential News

Proudly Serving the Alameda Community and Aiming for Zero Waste!



The ACI Curbside Collection Program

Help us provide safe & efficient service.

- Place carts out for collection by 6:00am and remove prior to 12:00am the following day.
- Make sure cart wheels are facing your home.
- Leave three feet (or as much space as possible) between each cart and avoid placing carts near obstacles.
- Place materials loosely in carts so they will empty properly.
- Make sure cart lids are fully closed. Overloaded carts can cause litter and attract critters.
- Report damaged carts to ACI so that we can schedule a repair or replacement on your next service day.

Used Oil & Filter Collection

ACI offers **free** curbside collection of used motor oil jugs, used cooking oil in sealed screw top containers, and filter bags. Contact us via our website or call **(510) 483-1400** for delivery of a free used oil kit.



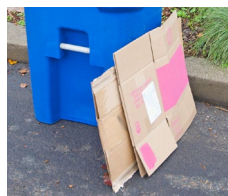
Household Batteries

Place them in a zipper-lock style bag on top of (**not inside**) your **recyclables** collection cart. Cover/tape terminals on nine-volt batteries. No automotive or liquid lithium-ion batteries are allowed.



Extra Cardboard

Flatten, cut into pieces no larger than two feet by three feet, and stack next to your **recyclables** cart.



Batteries Don't Belong

It is illegal to dispose of batteries, and any other Household Hazardous Waste, inside any ACI collection container.

Keep our workers safe. Batteries that are not handled properly can start fires, endangering our employees and damaging vehicles and equipment. Proper disposal of all Household Hazardous Waste is fast and free at four locations in Alameda County. Contact the Alameda County Household Hazardous Waste at **1 (800) 606-6606** or visit **StopWaste.org/hhw** for more information.

Please Remember

People sort your recyclables. Scan the QR code for a list of what belongs in each collection container and to watch our Materials Recovery Facility (MRF) tour video.



For more service information, visit AlamedaCountyIndustries.com/alameda/residentialrecyclingguide

Easy Ways to Be Sustainable

DON'T WASTE FOOD

- Purchase only what you need and use what you buy.
- Compost any leftovers (use your green organics cart and handy kitchen pail).

For more tips on how to reduce food waste, visit StopFoodWaste.org

REDUCE, REUSE, RETHINK, AND REPAIR

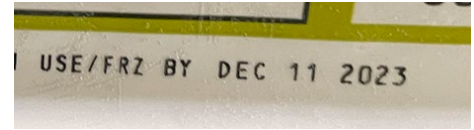
- Buy fewer things, shop second-hand, and repair what you can.
- Use reusable shopping bags, travel mugs, and water bottles.
- Choose products sold with little or no packaging.
- Refuse disposable foodware and single-use condiments.

Find more info on better buying decisions at StopWaste.org/at-home/reduce-reuse-recycle-rot/buy-green

PLANT NATIVE SPECIES

- Encourage native species in your garden or space outside your home.
- Replace non-native plants, especially any considered invasive.
- Skip insecticides and other chemicals.

Visit the California Native Plant Society for more resources. cnps.org/gardening



Understanding Food Product Date Labels

Regardless of the date, consumers should always evaluate the quality of food prior to its consumption.

"BEST BY" Indicates when a product will be of best flavor or quality. Not a purchase/safety/expiration date.

"SELL BY" Tells the store how long to display the product for sale for inventory management. Not a safety/expiration date.

"USE BY" Last date recommended for use of the product while at peak quality. Not a safety/expiration date except when used on infant formula.

"FREEZE BY" Indicates when a product should be frozen to maintain peak quality. Not a purchase or safety date.

HOLIDAY SERVICE SCHEDULE: The collection service schedule will NOT change during the weeks of Martin Luther King Jr. Day and Presidents' Day. Please be sure to put your carts out for collection by 6am on your regular service day.



**Remember to:
Reduce,
Reuse,
Recycle,
Rot, & Donate.**

Printed on recycled paper. Please recycle again.



Alameda County Industries

We are proud to be your service provider for **Recyclables, Organics, & Garbage.**

Office:
M-F: 7am-6pm
2307 Blanding Ave. Ste. B
Alameda, CA 94501

Contact us:
AlamedaCountyIndustries.com
info@AlamedaCountyIndustries.com
510-483-1400

GO PAPERLESS PLANT A TREE.

Sign up for paperless billing and we will plant a tree. Visit AlamedaCountyIndustries.com/alameda/plantatree for more info.

