



Curbside Organics Collection

- **NEW! Used cooking oil collection.***
- Place extra yard trimmings bags next to your organics cart on collection day. Only ACI bags are accepted. Contact us to purchase.
- Use the handy kitchen pail to collect food scraps and food-soiled paper in your home. When full, empty the pail into your organics cart. Need a pail? Contact us; we will deliver one.



Curbside Recyclables Collection

- **NEW! Household battery collection.***
- **NEW! Extra cardboard collection.***
- **Used motor oil and oil filter collection.** Place oil in one gallon or smaller, sealed screw-top containers less than 12" in height. Place oil filters in sealed zipper-style bags. Place jugs and bags next to (not inside) your recyclables cart on the curb, not in the gutter. We collect up to three gallons of used oils per week. No other automotive liquids are accepted. Request the delivery of the oil jug and filter bag by ACI.

Need more space? Residents subscribing to 64- or 96-gallon recyclables and organics service may request one additional and/or a larger cart (up to 96 gallons) at no additional charge.

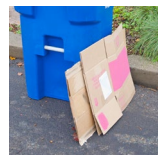
*NEW EXPANDED CURBSIDE COLLECTION SERVICES



USED COOKING OIL: Collect in one gallon or smaller, sealed screw-top containers less than 12" in height. Place next to (not inside) your organics cart, on the curb, not in the gutter. We will collect up to three gallons of oil per week. **Do not mix oils in the containers.** Request oil jug delivery by ACI.




HOUSEHOLD BATTERIES: Place them in a zipper-lock style bag on top of (not inside) your recyclables collection cart. Tape terminals on nine-volt batteries. No automotive or liquid lithium-ion batteries are allowed.



EXTRA CARDBOARD: Flatten, cut into pieces no larger than two feet by three feet, and stack next to your recyclables cart.

Proper Curbside Set Out

Follow these tips to help us provide safe, efficient service. 

Be ready. Your carts must be at the curb by 6 am on your collection day. **What day?** Log into your online account or contact us to find out.

We can do this all day. Leave your carts out until we've emptied them. (Our trucks can arrive at different times each week.) Still think we missed you? Contact us to get your carts serviced.

Give us our space. When possible, leave three feet between each cart. Place carts facing the street with wheels against the curb, and keep them away from obstacles (parked cars, fire hydrants, low-hanging branches, etc.).

Don't be too much. Avoid overloading your carts. The lids should close completely. Don't wedge or compact materials to make them fit - this can cause litter and may prevent your cart from being fully emptied when serviced. Overflow garbage will only be collected when you affix pre-paid tags to the bag(s). Contact us to buy tags or arrange for additional service.

We have our limits (curbside). Materials from construction, demolition, or landscaping projects do NOT belong in curbside carts. Call us to arrange temp debris box service for these items.

Put it away. Remember to put your collection carts away and out of public view after servicing.



City of Alameda Residential Service Guide



Alameda County Industries

We are proud to be your service provider for **Recyclables, Organics, & Garbage.**

2307 Blanding Avenue, Suite B, Alameda, CA 94501-1476

EXPANDED PROGRAMS & SERVICES AVAILABLE NOW. SEE INSIDE FOR MORE INFORMATION.

HAVE EXTRA OR BIG BULKY THINGS? USE THE ACI ON-CALL CLEAN UP PROGRAM

All single-family and multi-plex residential customers may schedule an annual on-call clean up to discard overflow waste, bulky items, reusable items, and recyclable materials.

AN ON-CALL CLEAN UP COLLECTION INCLUDES:

- up to three cubic yards of reusable materials, recyclable materials, yard trimmings, and solid waste
- up to three bulky items - one item may be electronic-waste
- available at no charge, once per 12-month period

For more information, contact us or visit AlamedaCountyIndustries.com/alameda/cleanup

THE HOLIDAY INFO

Holiday Collection Schedule*

- Thanksgiving Day, Christmas Day, and New Year's Day = **NO COLLECTION**
- All other holidays = **REGULAR COLLECTION**

Curbside Holiday Tree Collection*

- **WHEN?** During the month of January, on your regular collection day.
- **HOW?** Place clean trees curbside.

*Find more detailed information online at AlamedaCountyIndustries.com/alameda/holiday



ORGANICS/COMPOST

PLANTAS Y COMIDA 有机堆肥

NO METAL, GLASS, OR PLASTIC. REGULATION SB 1383 REQUIRES ORGANICS RECYCLING SERVICE.*

Your food scraps belong in the organics cart (not the garbage). It's easy with the ACI handy kitchen pail. Use it to collect food scraps and food-soiled paper. Empty the pail into your green organics cart when full.



FOOD SCRAPS - FRESH, FROZEN, COOKED, & MOLDY

- bread, rice, pasta, cereals, & grains
- coffee grounds & tea leaves
- dairy products
- egg shells
- fruits & vegetables
- meat & bones
- nuts & shells
- pits, peels, skins, & rinds



FOOD-SOILED PAPER

- paper coffee filters & paper tea bags
- newspaper & paper bags
- paper plates & cups (not plastic lined)
- paper take-out boxes (not plastic lined)
- paper towels & napkins
- pizza boxes
- waxed paper & wax-coated boxes
- wooden chopsticks & utensils



PLANTS, LEAVES, YARD TRIMMINGS, & CLEAN WOOD

- small branches (less than 6" in diameter)



- NO GLASS, METAL, STYROFOAM® OR PLASTIC**
- NO DIRT, ROCK, CONCRETE, BRICK, OR TREATED WOOD**
- NO LIQUID FAT, OIL, OR GREASE**
- NO GARBAGE, PET LITTER, OR FECES**
- NO HAZARDOUS WASTE**



NO SHARPS OR HAZARDOUS WASTE

It is illegal to dispose of hazardous waste in any ACI container. Please take hazardous materials to a Household Hazardous Waste (HHW) collection facility. There is a fast, free drop-off at four locations in Alameda County.

Visit StopWaste.org/hhw or call 1-800-606-6606 for more information.



RECYCLABLES

RECICLAJE 可回收物

PROPER SORTING MAKES A DIFFERENCE. AVOID CONTAMINATION BY KEEPING ITEMS CLEAN & DRY. PLEASE SCRAPE, WIPE, OR RINSE CONTAINERS. THANK YOU.

PAPER PRODUCTS - PLEASE FLATTEN BOXES

- cartons (dairy, juice, soup, broth, & milk alternatives)
- catalogs, junk mail, magazines, & phone books
- corrugated cardboard & paper boxes (flatten and cut large or multiple pieces)
- hard cover books (up to 40 lbs.)
- newspaper (including inserts)



GLASS BOTTLES & JARS

- please remove lids & recycle



ALUMINUM & METAL

- food & beverage cans
- paint cans (empty & dry only)
- pots & pans
- scrap metal pieces (up to 30 pounds per item)

RECYCLABLE PLASTIC BOTTLES, TUBS, & CONTAINERS

REDUCE SINGLE USE.

Visit Stopwaste.org/at-home/reduce-reuse-repair for more info.

- NO ORGANICS OR GARBAGE**
- NO WAX-COATED CARDBOARD**
- NO PLASTIC BAGS OR FILM PLASTIC**
- NO STYROFOAM®**
- NO PRESSURIZED TANKS**
- NO DIRT, ROCK, BRICK, OR CONCRETE**
- NO HAZARDOUS WASTE**

Scan the QR code for a searchable list of what goes where and a video that shows what happens to your recyclables after they are collected.



GARBAGE/LANDFILL

BASURA 垃圾填埋场

REMEMBER, IT'S ALWAYS BETTER TO REUSE, RECYCLE, COMPOST OR DONATE THAN TO DUMP IN THE LANDFILL.

NON-RECYCLABLE GLASS

- ceramics & Pyrex®
- incandescent lightbulbs only **NO FLUORESCENT, CFL, or LED**
- kitchenware (dishes, bowls, cups, etc.)
- mirror, tempered glass, & window glass



SNACK PACKAGING & NON-RECYCLABLE PAPER

- dryer sheets
- laminated items
- metallic & embellished wrapping paper
- paper used for cleaning (not food-soiled)
- photographs



NON-RECYCLABLE PLASTICS

- plastic cups, plates, & utensils
- plastic film, wrap, & bags
- plastic straws & stir sticks
- records, tapes, & CDs
- snack packaging
- Styrofoam® cups, plates, packaging peanuts, & blocks



OTHER

- balloons (latex & mylar)
- clothes hangers (plastic & metal)
- diapers & wipes
- hose (garden or rubber)
- personal hygiene products
- pet feces & litter (bagged)
- plastic sponges
- rubber bands
- shoes, clothing, textiles, rugs, & mats (that cannot be donated)
- toothpaste tubes
- toys (that cannot be donated)
- wood (stained or painted)

- NO ORGANICS OR RECYCLABLES**
- NO DIRT, ROCK, BRICK, OR CONCRETE**
- NO HAZARDOUS WASTE**



Questions? CONTACT US OR VISIT OUR WEBSITE TO FIND OUT MORE.



website AlamedaCountyIndustries.com/alameda
 email info@AlamedaCountyIndustries.com
 phone 510-483-1400
 office hours M - F, 7 am - 6 pm
 address 2307 Blanding Ave., Suite B, Alameda, CA 94501

*Senate Bill 1383 and Alameda County's Mandatory Recycling Ordinance require recycling. Learn more by visiting Stopwaste.org/Rules