



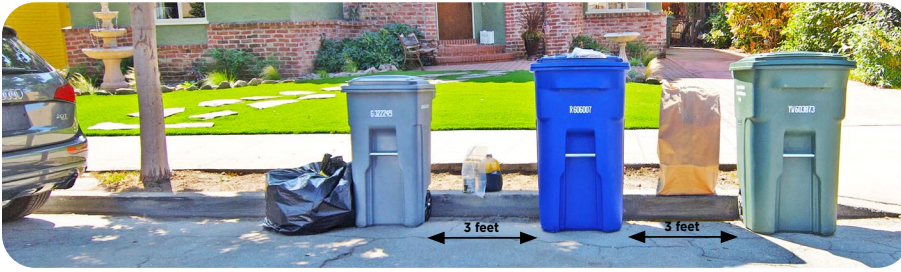
Alameda County Industries

We are proud to be your service provider for **Recyclables, Organics, & Garbage.**

City of San Leandro

Single Family Residential Customers

JULY - SEPTEMBER 2024



Proper Curbside Set Out

- Be sure your carts are at the curb by 6:00 a.m. on your collection day. Log into your account or contact us to find out when we service your area.
- Leave the carts at the curb until we've emptied them. *Our trucks can arrive at different times each week.*
REMEMBER: Put your collection carts away, off of the curb after servicing.
- Leave 3 feet between each cart and place your carts facing the street with wheels against the curb whenever possible.
- Keep carts away from parked cars, fire hydrants, low-hanging branches, parking meters, utility poles and other obstacles.
- Avoid overloading your carts. *The lids should close completely.* Do not wedge or compact materials in your carts. Doing so can cause litter and prevent your cart from being fully emptied when serviced.
- Overflow garbage will be collected when pre-paid tags are affixed to the trash bag(s). Call ACI to purchase tags or to arrange for additional service.
- Materials from a construction, demolition or landscaping project do not belong in your carts. Call ACI to arrange temporary debris box service for these items.



Curbside Organics

Extra yard trimmings bags can be purchased from ACI and placed next to your **Organics** cart on collection day (*only ACI bags are accepted, contact us to purchase*).



Curbside Recyclables

Excess cardboard can be flattened, cut to pieces no larger than 2 feet by 3 feet, and stacked next to your **Recyclables** cart.

**Proper Sorting Matters
We Appreciate Your Efforts!**

SB 1383

California's Compost & Recycling Law

EFFECTIVE JANUARY 2022



When compostable materials like food scraps, paper, and plant trimmings break down in landfills, they produce methane, a potent greenhouse gas and contributor to climate change.

Placing food scraps in the compost bin instead of the garbage helps fight climate change.

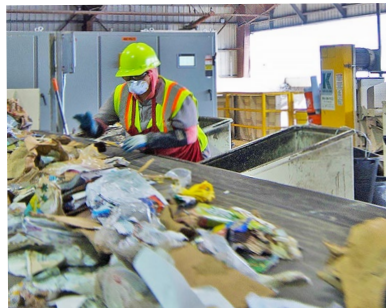
California state law (SB 1383) will help keep compostable materials out of landfills. In Alameda County, the Organics Reduction & Recycling Ordinance is in place to help residents and businesses comply with the regulations set by the state.



The local law is implemented through a partnership between the City of San Leandro, ACI, StopWaste, and Alameda County Environmental Health Departments.

Protect Our Sorting Staff

Our Materials Recovery Facility (or MRF) sorting staff thanks you for keeping them safe by making sure needles, sharps, masks, gloves, wipes, tissues, garbage, organics, and anything with bodily fluids on it stay out of the recycling.



Scan the QR code for a list of what goes where and a virtual video tour to find out what happens to your recyclables after collection.



Used Oil & Filter Collection

ACI will collect used motor oil in 1-gallon or smaller sealed screw-top containers and used oil filters in a sealed zipper-lock style bag. Place next to (*not inside*) your **Recyclables** cart. Request free oil jugs and oil filter bags from ACI. *No other automotive liquids accepted.*

On-Call Clean Up Program



San Leandro residents of single-family homes and multi-family complexes, with eight units or less, may schedule a cleanup once per 12-month period at no charge. Contact ACI to determine eligibility and to schedule your cleanup. Visit [AlamedaCountyIndustries.com/sanleandro/residential/cleanup](https://www.alameda-county.com/sanleandro/residential/cleanup) for more info.

WHEN IN DOUBT, FIND OUT! CONTACT US:

website: [AlamedaCountyIndustries.com/sanleandro](https://www.alameda-county.com/sanleandro)
phone: (510) 357-7282 • email: info@AlamedaCountyIndustries.com