

HOW CAN WE RECYCLE & REDUCE WASTE IN CASTRO VALLEY?

MULTI-FAMILY COMMUNITY
SERVICES GUIDE 2019-2024





CVSan is a local public agency committed to providing safe, efficient, and effective zero waste and wastewater services. CVSan works on behalf of residents to plan and implement programs designed to meet state and local mandates for waste diversion through education and best practices.

Alameda County Industries (ACI)

CVSan has a 10-year municipal solid waste (recycling, organics, garbage, and construction and demolition debris) collection and processing agreement with Alameda County Industries (ACI) from May 1, 2019 - June 30, 2029. ACI currently contracts with the Cities of Alameda and San Leandro and has provided collection services since 1997. ACI's main office is located at 610 Aladdin Avenue in San Leandro. Learn more at www.AlamedaCountyIndustries.com.

Below: ACI collection vehicle in front of CVSan offices on Marshall Street.



ZERO WASTE BY 2029



WHAT IS ZERO WASTE?

Zero Waste means designing and managing products and processes to avoid and eliminate the volume and toxicity of waste and materials, conserve and recover all resources, and not burn or bury them. CVSan residents have been selecting their paths to Zero Waste by practicing the 4Rs (Reduce, Reuse, Recycle, and Rot). If given the choice, the best option is to prevent or reduce the amount of waste that is generated in the first place. The next best option is to reuse items.

CVSan residents play an important role in achieving Zero Waste by 2029.

ON THE COVER

For a zero waste event like this, decorations are reused

No single-use disposables are used.



Pallets are reused for seating and table space.

THE 4Rs: REDUCE & REUSE



REDUCE TO CONSUME LESS & MAKE LESS WASTE.

No Thank You. Skip the straw when ordering a beverage at a restaurant. Carry your own bag when shopping. Say, “no thank you” to plastic utensils, sauce packets, and other giveaways and use what you have at home or bring your own when traveling.

Participate in CVSsan’s Zero Waste Week. Every February CVSsan hosts a week-long event to help residents learn more about reducing waste and living Zero Waste lifestyles. Event workshops vary annually. Visit www.cvsan.org/ZeroWasteWeek to learn about Zero Waste Week activities.

Find ways to Select Your Path to Zero Waste. Reducing your use is easy with CVSsan’s Zero Waste website, www.SelectMyPath.org. Visit for tips and articles on how to reduce waste in every aspect of your life – from travel, to childcare, to cooking.



REUSE TO USE AGAIN.

Support local businesses that practice reuse. CVSan has created Reuse Maps that highlight Castro Valley businesses that practice reuse by selling reused items, repairing items, or by providing other reuse services. Visit www.cvsan.org/ReuseMaps to see the complete list of businesses and shop local.

Attend a Fixit Clinic. Fixit Clinic events are designed for residents to bring in their broken items and learn how to repair the item themselves. Instead of ending up in the landfill, fixed items can be reused. Workspaces, specialty tools, and coaches are available for participants. For event dates, visit www.cvsan.org/RepairWorkshops.

THE 4Rs: RECYCLE & ROT



RECYCLE TO PROCESS AND REMANUFACTURE A RESOURCE INTO NEW PRODUCTS.

Drop off items at a Recycles Day event. Every April and August CVSan hosts collection events for residents to drop off e-waste, household hazardous waste, and other items for recycling or proper disposal. For this year's dates and a list of accepted items, visit www.cvsan.org/RecyclesDay.

Attend a processing facility tour. What happens to your organics, garbage, and recycling once it leaves your curb? Find out by attending a tour of ACI's processing facility and the Davis Street Transfer Station in San Leandro. For details and tour dates, visit www.cvsan.org/DSTSTour.



ROT THE CONTROLLED BIOLOGICAL DECOMPOSITION OF ORGANIC MATERIALS.

Pick up free compost at a Recycles Day event. Along with dropping off items for recycling, CVSsan residents can receive free bags of compost at CVSsan's bi-annual Recycles Day events. The compost given at these events is created from materials processed from our green organics carts.

Start food scrap recycling. CVSsan offers one free food scrap recycling pail to all households. To receive your pail, visit our offices at 21040 Marshall Street, Castro Valley, Monday - Friday, 7:00 – 11:00 a.m., 12:00 – 4:00 p.m.

Volunteer at CVSsan's Earth Day event. Since 2003 CVSsan has hosted an annual Earth Day Clean-Up benefiting Castro Valley schools, parks, and public areas. Volunteers often remove litter and plant debris and spread new compost and mulch. Visit www.cvsan.org/ED to learn about volunteering.



WHAT GOES IN MY BLUE RECYCLING CART OR BIN?



All plastics #1-7
(except foam)



Scrap metal
(up to 2 ft. & 40 lbs.)



Aluminum foil products
& metal containers

Quality standards have increased. Effective March 1, 2018 China finalized a quality standard of 0.5% contamination for imported recyclables.



Bundled plastic bags/wrap



Shelf stable (foil-lined) cartons



Glass containers



Clean paper & cardboard

WHAT DOES NOT BELONG IN THE BLUE RECYCLING CART?

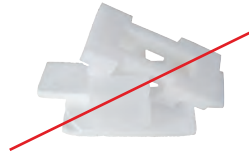
All of these items belong in the gray garbage cart, not the blue recycling cart:



Ceramics & glassware



Windows, mirrors, & sheet glass



Foam

1. DEPACKAGE/EMPTY

Scrape food into the green organics cart first. Recycle empty aerosol cans.



2. RINSE/WIPE

Give containers a quick rinse or wipe.

3. KEEP RECYCLABLES LOOSE

Don't bag them! (except for bundled plastic bags/wrap).

HOUSEHOLD (DRY-CELL) BATTERIES FOR BLUE CARTS

Place AAA, AA, B, C, D, 9V, and small "button" batteries in a sealed heavy-duty plastic bag on top of your blue recycling cart (this program is not available for those with blue metal recycling bins). Liquid batteries, such as automobile batteries and lithium-ion batteries, are not accepted. **See page 15 for how to dispose of these batteries.**

OVERSIZED CARDBOARD FOR BLUE CARTS

Cardboard that cannot fit in the blue recycling cart can be flattened up to 4' x 4' and placed beside the cart. This service is not available if you have blue metal bins for the collection of recyclables.



WH
CA
REC

WHAT ELSE
CAN BE
RECYCLED?

TEXTILES

During the first full week in June and October on your regular collection day, place usable and nonusable bagged textiles (household linens, clothing, etc.) on the curb next to the blue recycling cart; they will also be collected at Recycles Day events in April and August. Textiles will be sorted for reuse. Do not set out textiles that are wet, moldy, or have human biowaste, blood, toxic chemicals, or motor oil on them. No light-up shoes or clothes. Customers will not receive a tax-deductible receipt for textiles that are set out for curbside collection.



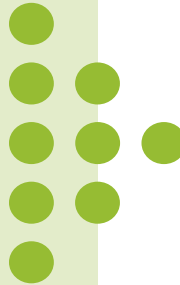
BULKY ITEMS

Please **see page 17 for information on bulky item pick-ups** for multi-family communities.





WHAT GOES IN MY GREEN ORGANICS CART OR BIN?



Food scraps



Shredded paper
in paper bags



Food-soiled cups
& paper containers

HOW CAN I COLLECT FOOD SCRAPS?



Paper



Bio-Bag



Carton



Pail



Paper cartons
& egg cartons



Vegetarian (rabbit,
hamster, etc.) pet feces



Yard trimmings, uncoated wood
& chips, cactus & palm

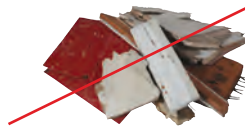


Paper towels, plates
& napkins

WHAT DOES NOT BELONG IN THE GREEN ORGANICS CART?



Plastic (bags, flower
pots, etc.), glass,
metal & aluminum
belong in the blue
recycling cart



Treated or coated
wood belongs in the
gray garbage cart



Rocks, dirt &
concrete belong in
a construction and
demolition debris
box (see page 16)

EXTRAS?

- Upsize to larger carts. Call **510-483-1400**
- 30-gallon Paper Garden Bags. www.cvsan.org/ExtraService



SCHEDULE A BULKY AND REUSE PICK-UP

See page 17 for
information.



ORGANICS

Materias Orgánicas / 有机物



Food scraps



Plant debris &
untreated wood



Clean paper, cardboard
& shelf-stable (foil-lined) cans



Food-soiled, beverage & shredded paper



Metal



RECY

El Reciclaje / 回收



Clean paper, cardboard
& shelf-stable (foil-lined) cans



Metal



YCLE



GARBAGE

Basura / 拉



rtions

Plastics #1-7
(no foam)



Pouches, straws
& utensils



Foam



Glass



Glassware & ceramics



Hygiene, pet & medical





WHAT GOES IN MY GRAY GARBAGE CART OR BIN?



Foam



Sheet glass
(window, mirrors, etc.)



Cat litter & non-vegetarian
(cat, dog, etc.) pet feces

REDUCE GARBAGE TO SAVE

Reduce your garbage size,
readjust your services and you
might receive a monthly savings.



Pouches, straws
& utensils



Non-fluorescent light bulbs
(Turn the page for fluorescent
disposal options)



Hoses & wire



Treated wood
(painted & stained)



Diapers & hygiene products



Glassware & ceramics

CAN'T FIT IT ALL IN YOUR CART?

For occasional extras, Extra Service Tags can be purchased from CVSan. For information and price, visit www.cvsan.org/ExtraService.

If you have large items to dispose of, turn to page 17 for Bulky and Reuse Pick-Up information.

UPSIZE RECYCLING & ORGANICS

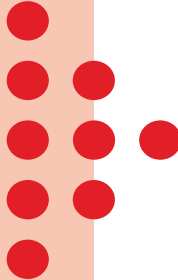
If you don't have as much recycling or organics capacity as garbage, call **510-483-1400** to increase your recycling and organics capacity for free (carts only).

GARBAGE EXEMPTION

Call **510-483-1400** to request a garbage service exemption. Recycling and organics services are still mandatory.



WHAT ITEMS CANNOT GO IN MY CURBSIDE CARTS OR METAL BINS?



HOUSEHOLD HAZARDOUS WASTE



Paint: additives, latex paint, oil paint, shellac, solvents, stain, thinners



Adhesives: caulk, cement, epoxy, mortar, putty, stucco, wood glue

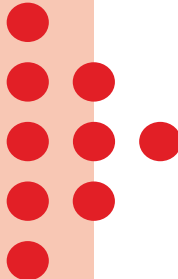


E-Waste: computers, phones, printers, radios, TVs, other consumer electronic devices with circuit boards



Auto: additives, antifreeze, batteries, fuel, motor oil, oil filters, waxes

WHERE CAN I DISPOSE OF THESE KINDS OF WASTE?



All items listed above are accepted at Alameda County Household Hazardous Waste Facilities. For locations and hours, visit www.cvsan.org/HHW.

Visit www.cvsan.org/Pharms for additional pharmaceutical drop-off locations and information on approved sharps containers.

Additionally, every April and August, CVSan hosts Recycles Day events to collect items listed to the right. For this year's event dates, visit www.cvsan.org/RecyclesDay.



Drugs: old, expired, or unneeded prescription & non-prescription drugs



Sharps: injectors, lancets, needles



Garden: ant traps, fertilizers, gopher bait, herbicides, pesticides, rat poison, sprays



Misc.: acids & caustics, bleach & cleaners, fluorescent & LED bulbs, household batteries, pool & photo chemicals



WHERE CAN I DISPOSE OF CONSTRUCTION & DEMOLITION DEBRIS?

Construction and demolition (C&D) debris boxes can be requested by calling ACI at **510-483-1400**. Material can also be dropped off at the Davis Street Transfer Station in San Leandro. Vouchers for 2 cubic yards of free C&D debris drop-off are available at each April CVSan Recycles Day event. Visit www.cvsan.org/CandD for more information on debris disposal options.



ITEMS ACCEPTED/DISTRIBUTED AT RECYCLES DAY EVENTS

CVSan Recycles Day Events	Textiles	Household Hazardous Waste	E-Waste	Tires or Mattresses	Documents for Shredding	Cooking Oil	C & D Vouchers	Compost Giveaway
April Events	X		X	X	X	X	X	X
August Events	X	X	X					X

Note: Event months and accepted items are subject to change. Visit www.cvsan.org/RecyclesDay for the most up-to-date information.

WHAT SHOULD I DO WITH ITEMS THAT ARE TOO LARGE FOR THE CARTS?

Property Managers/Owners can call ACI at **510-483-1400** to schedule a Bulky & Reuse Pick-Up for the entire multi-family community, or an individual residence. Two cubic yards per unit per calendar year are allowed at no additional charge. Up to 2 cubic yards per unit per year is allowed. Additional pick-ups can be arranged for a fee. The ACI Operations Supervisor will designate a Reuse Zone Area, for items that are in good condition, with the Property Manager. ACI will provide signage to designate the Reuse Zone Area on the property.



WHAT WILL HAPPEN TO MY BULKY ITEMS?

Before being landfilled, items will be sorted and salvaged for reuse or recycling.

SCHEDULE A PICK-UP

Call ACI to schedule a pick-up. Appointments are not available during the two week period in January beginning with the first Monday or the first week of June and October. Requests made at the end of the calendar year may not be fulfilled within the calendar year, so schedule appointments in advance.

SET OUT ITEMS FOR PICK-UP

Place items in the debris box provided by Alameda County Industries by 6:00 a.m. on the scheduled pick-up day. Do not block the street or sidewalk. **Canyonlands residents-** please contact ACI to coordinate a collection location.

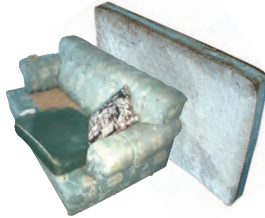
WHAT CAN BE SET OUT FOR BULKY & REUSE PICK-UPS?

You will be charged for excess materials. No items over 75 pounds except for furniture and appliances. For a more detailed list of accepted items, visit www.cvsan.org/BulkyPickup.

ACCEPTABLE ITEMS FOR BULKY & REUSE PICK-UPS



Up to 4 car or light truck tires (rims must be separated from the tires)



Household furniture, pillows & mattresses



Yard trimmings & wood (up to 6" in diameter tied in bundles not longer than 4')



Clothing, textiles, shoes, belts, purses & craft/sewing items



Scrap metal



Housewares, TVs, electronics & appliances (remove or seal doors)



Trash that is bagged, boxed, or bundled



Books, CDs, VHS, DVDs, magazines, & framed pictures

**DO NOT
INCLUDE**



Hazardous waste



Construction & demolition debris & dirt

**See page 15 for
how to dispose
of these items.**



CVSAN MULTI-FAMILY RECOGNITION PROGRAM

GET REWARDED FOR YOUR MULTI-FAMILY COMMUNITY EFFORTS TO REDUCE WASTE!

Apply to the CVSan Multi-Family Community Recognition Program.

What are the benefits to your complex?

- A choice of reward (for properties and individual residents) with a value based on diversion and performance level.
- Receive a framed certificate, window decal, and listing on our website.

What does your complex have to do to achieve recognition?

- Comply with all Mandatory Recycling (and Organics) Ordinance requirements.
- Complete “Four Rs” actions (examples shown on the next page).

Who is eligible?

Any residential complex with 5 units or more in the CVSan boundaries.

How does my community apply?

Please visit www.cvsan.org/MFDRognition for more information and a detailed application.

REDUCE

Reduce garbage service, give StopFoodWaste's Produce Storage Guide to tenants, promote MoveForHunger.org, and convert landscaping to Bay-Friendly.



REUSE

Schedule and educate tenants on Bulky and Reuse Pick-Ups once a year, promote reuse sales and donation, host a collection drive for coats or other clothing for charity, and host a community garage sale.



RECYCLE

Achieve a 50% recycling rate or better, provide recycling information to tenants twice a year, promote CVSsan Recycles Day, give out CVSsan recycling caddy/bags to tenants once a year, and have signage on recycling enclosure areas.



ROT

Give out CVSsan food scrap pails to tenants (where needed) once a year, provide food scrap recycling information to tenants once a year, achieve more organics service than garbage service, and have organics enclosure area signage.



FREE RESOURCES FOR MULTI-FAMILY COMMUNITIES

Multi-family communities are an important part of CVSsan's goal to reduce the amount of garbage sent to landfills. Supplying you with containers, materials and supplies you need to fill those organics and recycling bins is an important component.



Examples of past donation requests are as follows:

- Slim Jim containers with lids (recycling or organics)
- Recycling tote bags
- Food scrap recycling pails
- Signage that identifies carts or containers and what goes where

Item Description	Qty	Unit	Notes
Blue Slim Jim Bin	10	Each	
Green Recycling Tote Bag	5	Each	
Food Scrap Recycling Pail	3	Each	
Recycling Signage	2	Each	

CVSsan
Donation & Supply Request Form

PLEASE PRINT CLEARLY AND IN BLOCK LETTERS. ALL INFORMATION MUST BE PRINTED IN BLOCK LETTERS. ALL INFORMATION MUST BE PRINTED IN BLOCK LETTERS. ALL INFORMATION MUST BE PRINTED IN BLOCK LETTERS.

Name of Community: _____
 Address: _____
 City: _____ State: _____ Zip: _____
 Phone: _____ Fax: _____
 Email: _____

Requester Name: _____
 Title: _____
 Phone: _____ Fax: _____
 Email: _____

Requester Signature: _____
 Date: _____

CVSsan Representative Name: _____
 Title: _____
 Phone: _____ Fax: _____
 Email: _____

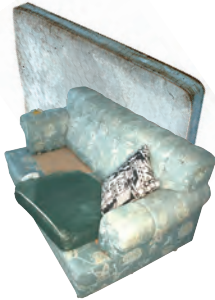
Requester Signature: _____
 Date: _____

CVSsan Representative Signature: _____
 Date: _____

Please visit www.cvsan.org/drform to fill out a request and send completed forms to CVSsan via fax **510-537-1312** or email contact@cvsan.org.

If you don't find what you need on the form, don't worry. We donate a wide range of supplies to help multi-family communities reduce waste. We can even customize signs to fit the enclosures/areas and collection program you have at your community.

ADDITIONAL INFORMATION FOR MULTI-FAMILY COMMUNITIES



Move In and Move Out Tips

- Find boxes and donate reuseable ones at local shipping centers and stores.
- Don't forget reuse options/websites (do not dump!) for things that are still usable. Visit www.cvsan.org/reuse for more resources.
- Mattresses are recyclable and www.byebyemattress.com has local options.
- For non-perishable food, www.MoveForHunger.org can help.



For significant life changes, you may be left with taking care of, or needing to acquire, a lot of extra materials. There are many options to consider such as: donation, buying, selling, and others. For more information, please visit www.cvsan.org/reuse.



StopWaste also has space/building guidelines for multi-family community enclosures to help you plan for adequate space for organics, recycling, and garbage collection at www.stopwaste.org/resource/space-guidelines-recycling-organics-and-refuse-services.

Is no one in your household able to take carts to the curb?

If you have physical difficulty taking your carts to the curb, call ACI at **510-483-1400** or visit www.AlamedaCountyIndustries.com for a curbside exemption form. Upon approval, ACI will access carts from your backyard or side yard. You will need to submit a doctor's letter or certificate from the Department of Motor Vehicles each year to qualify.

HOLIDAY INFORMATION

No service will be provided on Thanksgiving Day, Christmas Day, and New Year's Day. Services will be one day later than usual (through Saturday).

Holiday trees may be set out curbside or in the general collection area on your regular collection day during a two-week period in January, beginning the first Monday of each year. At the end of this period, clean unflocked holiday trees may be cut up and placed inside the organics cart or bin for collection.

Before setting out a tree for collection, remove ornaments, tinsel, nails, and stands. Flocked trees will be collected, but not composted. If necessary, cut the tree into a maximum of 6-foot lengths.



IMPORTANT CONTACTS

For service related matters, contact:

ALAMEDA COUNTY INDUSTRIES (ACI)

510-483-1400

www.AlamedaCountyIndustries.com/CVSan

Monday - Friday,
7:00 a.m. – 5:00 p.m.

For more information on Castro Valley's Zero Waste programs, contact:

CASTRO VALLEY SANITARY DISTRICT (CVSan)

510-537-0757

www.cvsan.org

Monday - Friday,
7:00 – 11:00 a.m.
& 12:00 – 4:00 p.m.

REPORT ILLEGAL DUMPING

Alameda County Public Works Agency
510- 670-5500

www.acpwa.org

REDUCE

Select Your Path to Zero Waste

www.SelectMyPath.org

Stop Wasted Food

www.stopfoodwaste.org

REUSE

Repair Items

www.fixitclinic.org

Donate Items

www.cvsan.org/Reuse

RECYCLE

Dispose of Household Hazardous Waste

800-606-6606

www.household-hazwaste.org

Find a Beverage Container Recycling Center

800-RECYCLE

www.bottlesandcans.com

ROT

Bay-Friendly Landscaping

510-444-SOIL

www.rescapeca.org

Buy Compost or Mulch

Davis Street Garden Center

510-639-7342

www.dsgardencenters.com





CASTRO VALLEY SANITARY DISTRICT

21040 Marshall Street
Castro Valley, CA 94546-6020
510-537-0757
www.cvsan.org

**ALAMEDA COUNTY INDUSTRIES (ACI)
COLLECTION AGREEMENT BEGAN ON MAY 1, 2019**